



~300 Gal. Double Wall Used Cooking Oil Container

Specifications

Model

~300 GALLON

Architectural Dimensions

33" W x 66" D x 42.5" H

Capacity

~300 GALLONS

Optional Casters

6X2 HEAVY DUTY POLYOLEFIN
SWIVEL CASTER

Caster Capacity

600 lb EACH

Lid Dimensions

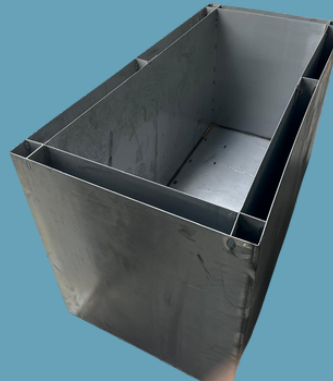
21" x 21" PULL UP TOP AND
SLIDING GRATE SYSTEM

Steel Gauges

14 AND 12

Weight

~530 lb



Features

- Made using hot-rolled steel in a combination of 12 and 14 gauges
- Large diameter opening allows for easy access
- Hinged lid helps prevent spills and leakage
- Hidden locking mechanism for theft protection
- Optional: 4 high-capacity swivel casters for mobility
- Containers without casters include 2 legs to prevent corrosion to bottom of container.



MetalKraft LLC

3421 NW 36th Street

Miami, FL 33142

(786) 325-6856

www.mkcontainers.com

info@mkcontainers.com